

Manhole-Rieber connection gasket

The flexible connection gasket as per DIN EN 681-1 to connect PVC (KG) sewer pipes and pipes from other materials.

Manhole-Rieber is an integrated steel-reinforced sealing system most suitable for the production of customary as well as in particular monolithic manhole bases. The gaskets are mounted onto special forming units and are thus integrated in the manhole base unit before production.

Either we deliver these formwork units as reusable formwork or they are made directly as part of the channel form made of polystyrene.

Benefits

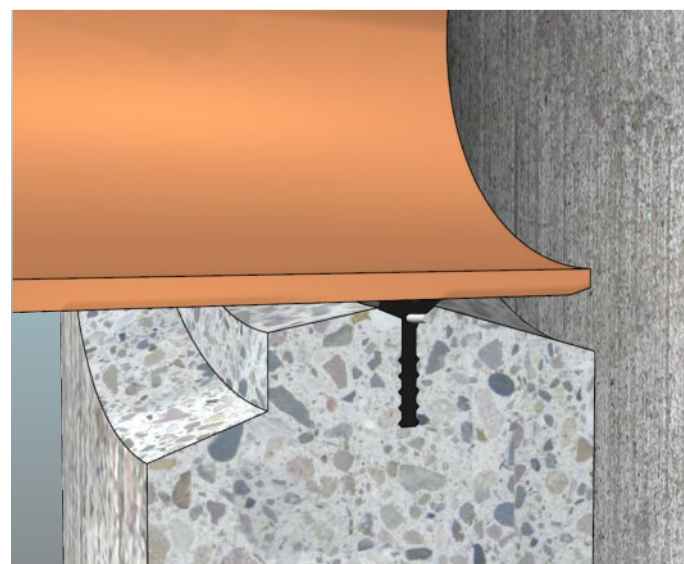
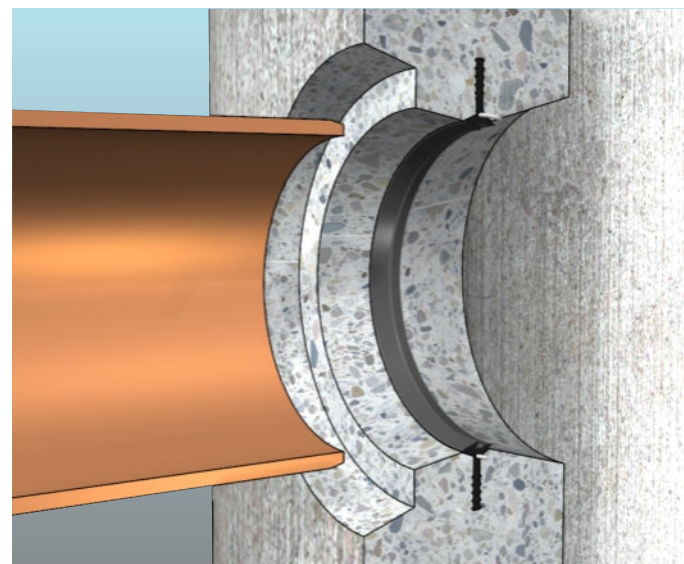
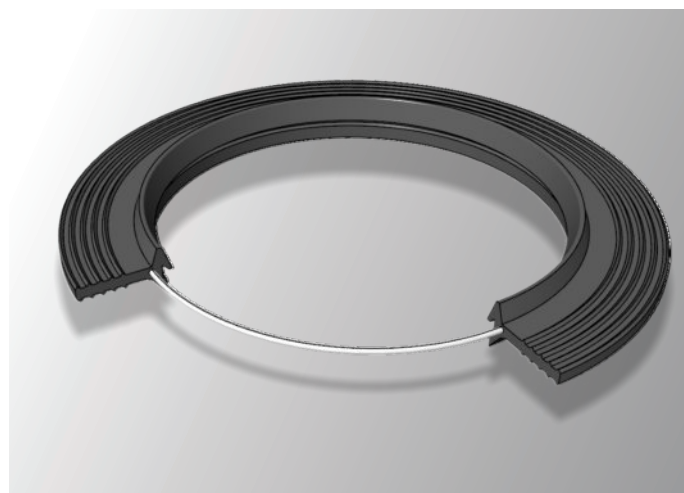
- Integrated in the concrete wall during manhole production.
- Cost-efficient, no loose gaskets.
- Easy-to assemble pipes.
- Wide angular deflection of pipes possible.
- Connections for the following types of pipes:

DN 110 PVC
DN 125 PVC
DN 160 PVC
DN 200 PVC
DN 200 cast
DN 250 PVC
DN 315 PVC
DN 400 PVC
DN 500 PVC
DN 630 PVC

Material

Manhole-Rieber gaskets are fabricated from Styrene-Butadiene rubber (SBR). The use of SBR has proven its worth in rainwater and wastewater applications due to its excellent sealing characteristics.

Note: We recommend using seals fabricated from Nitrile-Butadiene rubber (NBR) for applications involving mineral fuels such as oils, petrol, or similar.



Contents such as technical specifications, values, and dimensions are given to the best of our knowledge, however, without any guarantee and liability. If not specified otherwise, dimensions are given in millimetres. Our General Terms and Conditions shall apply.

